



# LIFTSLIDE DOORS

Technical Guide L

# FEATURES & SPECIFICATIONS

## Styles

Jamb or pocketing, single or multi-panel systems in stacking, bi-parting or corner configurations.

## Standard Features

---

6063 T5 aircraft grade aluminum extrusions

---

Thermally broken aluminum panels

---

Corrosion resistant track with standard transverse drains

---

Thermally efficient fiberglass raised threshold with integrated drainage

---

Flexible gasket material

---

3 1/2" (89 mm) wide x 3 3/16" (82 mm) thick stiles  
(4" (102 mm) wide with Back Cap)

---

Robust hardware handles a maximum weight of 850 lbs per panel

---

Recommended maximum panel size with standard glass is 88" (2235 mm) wide or 88" (2235 mm) tall and 70 square feet of glass

---

Corrosion resistant stainless steel wheel assemblies with deformation resistant wheels and precision bearings

---

Optional all-wood panels

## Hardware

Durable, corrosion resistant hardware designed to withstand the elements providing nearly effortless operation. The solid brass Marcos handle is available in both removable and fixed configurations in five finishes: Oil rubbed Bronze, Bright Brass, Satin Nickel, Matte Black, and Dark Bronze. Optional solid bronze Flush Handle is available in: White Bronze Brushed, Bronze Dark Lustre and Silicone Bronze Dark. Complementary edge pulls assist in sliding the door from a pocket. The stainless steel wheel mechanisms feature deformation resistant wheels and precision bearings to ensure smooth performance.

## Glazing

LowE Double, LowE Triple, Tranquility® and StormForce™. StormForce is not available on all products. Double or triple glass configurations with 1/2" (13 mm) airspace. With countless glazing configurations and LowE coating options, we ensure that you can choose the perfect blend of protection and comfort. LowE best describes the benefits of the product that incorporates glazing coatings and Argon gas. LowE systems help reduce heating and cooling costs, providing superior energy efficiency.

# FEATURES & SPECIFICATIONS

## Simulated Divided Lites (SDL)

Standard SDL complete with airspace grilles, where available. Grille bars are permanently applied to the interior and exterior.

Ogee Profile – 3/4" (19 mm), 1 1/8" (30 mm), 2" (51 mm)

Putty Profile – 5/8" (16 mm), 7/8" (22 mm), 1 1/8" (30 mm), 2" (51 mm)

Square Profile (interior only) – 5/8" (16mm), 3/4" (19 mm), 7/8" (22 mm), 1 1/8" (30 mm), 2" (51 mm)

## Metal Cladding

Heavy duty exterior metal cladding comprised of extruded aluminum is available in a variety of Palette colors, including anodized and Cyprium (copper and bronze cladding). Metal clad units are supplied ready-to-install complete with integral metal nailing flange.

## Wood

In addition to our standard Coastal Douglas Fir, the entire Loewen product line is also available in optional Mahogany. The interior can be natural wood (unfinished), primed, or prefinished in Jet Black or Oxford White paint. Additional wood species, as well as the Jet Black and Oxford White prefinishes, are available through our Custom Shop. All door panels are constructed with a laminated engineered core of Douglas Fir. Alternate species are a thick skin applied over the engineered Douglas Fir core. All wood parts are dipped in approved preservative.

## Performance Standards

Most units have been tested by an independent laboratory for air and water infiltration, structural performance, and thermal performance requirements.

## Frame & Panel

Thermally efficient fiberglass frame and sill with Coastal Douglas Fir interior. Opening panels are equipped with 3G corrosion resistant stainless steel wheel assemblies with flat resistant wheels and precision bearings. Aircraft grade aluminum extrusions with VG Douglas Fir Interior (Mahogany option available). Optional all wood construction available. Stiles are 3 1/2" (89 mm) wide x 3 3/16" (82 mm) high for extra strength and durability.

## Sills

Sills available in several corrosion resistant options. Flush tracks available in 1 1/2" (39 mm) versions with transverse drains with 18" (457 mm) drainage tubes. Fiberglass raised sills available for regions with more inclement weather conditions and colder climates.

## Weatherstrip

Flexible weatherstrip ensures maximum protection against air and water infiltration.

## Screen

Multi-function retractable screen available.

**Hardware Styles** **Liftslide**

Marcos Handle	●
Flush Handle	○

**Standard ●    Optional ○**

Finish Options: Refer to Section A.

**Variables** **Liftslide**

**Function**

Use for Egress	●
Available with Screen	○

**Performance**

LowE Double	●
LowE Triple	○
StormForce™	○

**Appearance**

SDL	○
Vertical Grain Fir Panel	●

**Standard ●    Optional ○**

Visit the Loewen Photo Gallery online at [www.loewen.com](http://www.loewen.com) for a large collection of Loewen product and elevation photography.

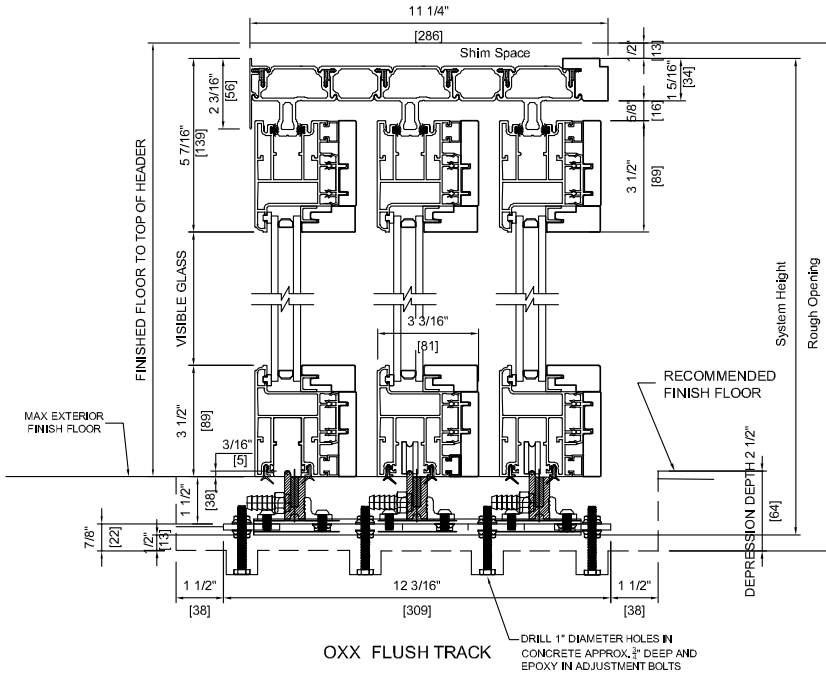
Numerous custom window configuration opportunities exist – please contact your Authorized Loewen Dealer.

Specifications and technical information are subject to change without notice. Imperial and metric measurements are converted accurately. However, in some cases, industry standards cause a 1 mm variance. (Example: 3/4" is shown as 19 mm for all glass measurements.) Cad Download: [www.loewen.com/architect](http://www.loewen.com/architect) | Installation Instructions: [www.loewen.com](http://www.loewen.com)

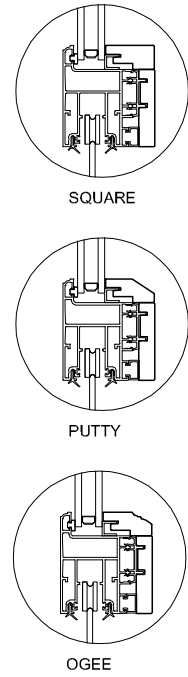


# Liftslide Door Detail

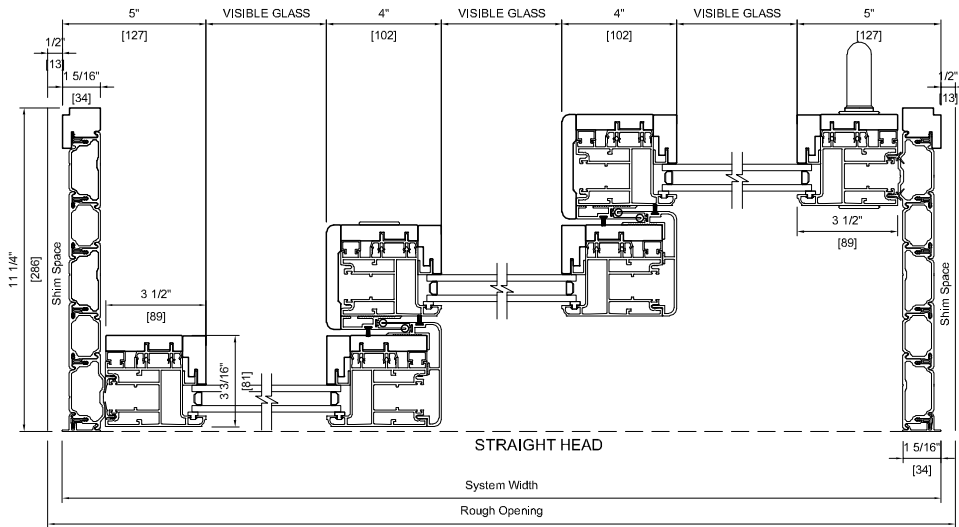
## Head & Sill Detail



## Glazing Stop Options



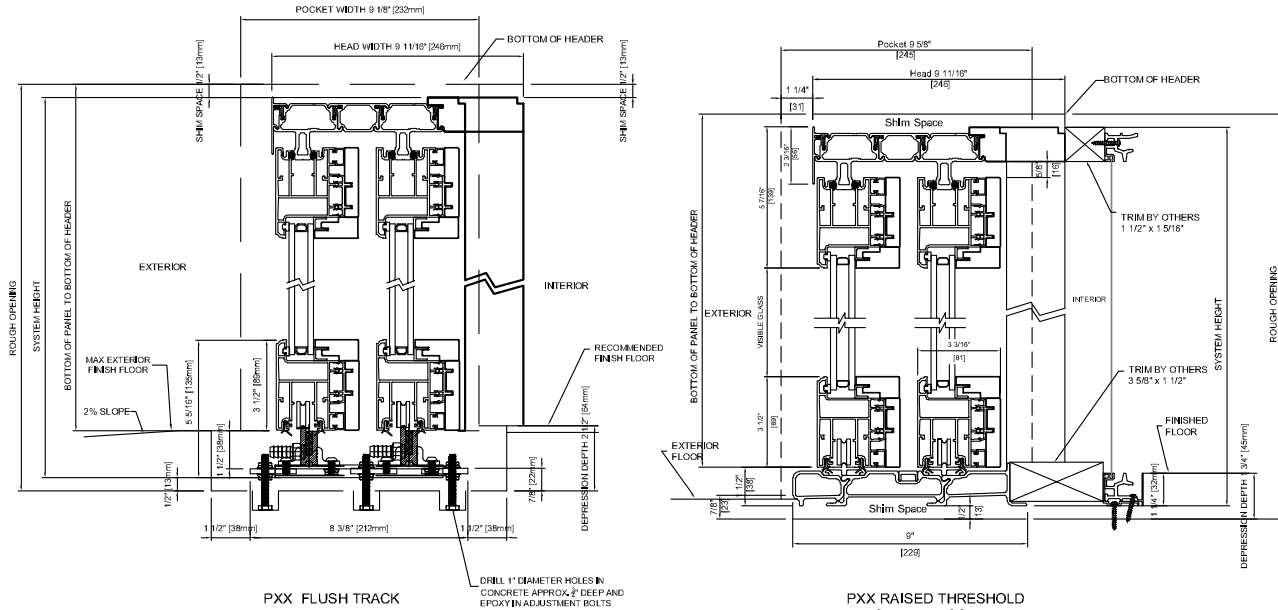
## Plan View



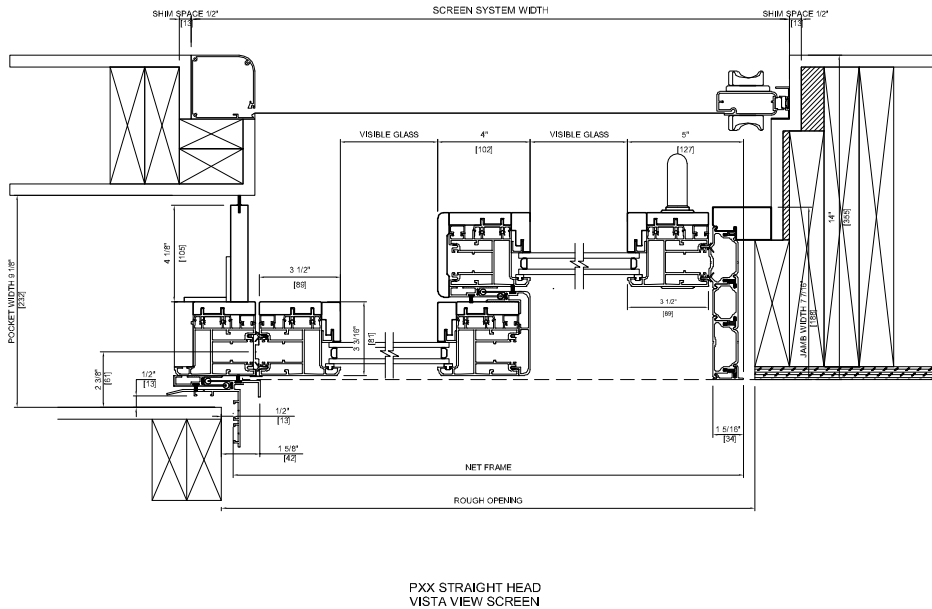
- Note:**
- Drawings shown are typical details.
  - Additional sizes and configurations available.
  - Screen options may be available depending on size and configuration.
  - Raised threshold available with a maximum of 6 panels per sill (12 in a bi-parting configuration; 2 per track).
  - Consult your Authorized Dealer for details.
  - All dimensions to have +/- 1/16" (2 mm) tolerance.
  - O = Fixed
  - X = Operating
  - P = Pocketing
  - The preparation of the rough opening for large openings such as those required by, but not limited to, LiftSlide and Bifold doors have unique requirements. Structural headers that allow for deflection no greater than 1/8" along the unsupported length once the header is fully loaded are required. Special care needs to be taken when installing any unit including transoms above such large opening units.
  - Loewen is not responsible for site measurements or the determination of structural and architectural requirements for the installation of large opening products such as but not limited to, Liftslide and Bifold doors. Site specifications are the responsibility of building professionals or engineers to determine.

# Liftslide Door Detail

## Head & Sill Detail



## Plan View



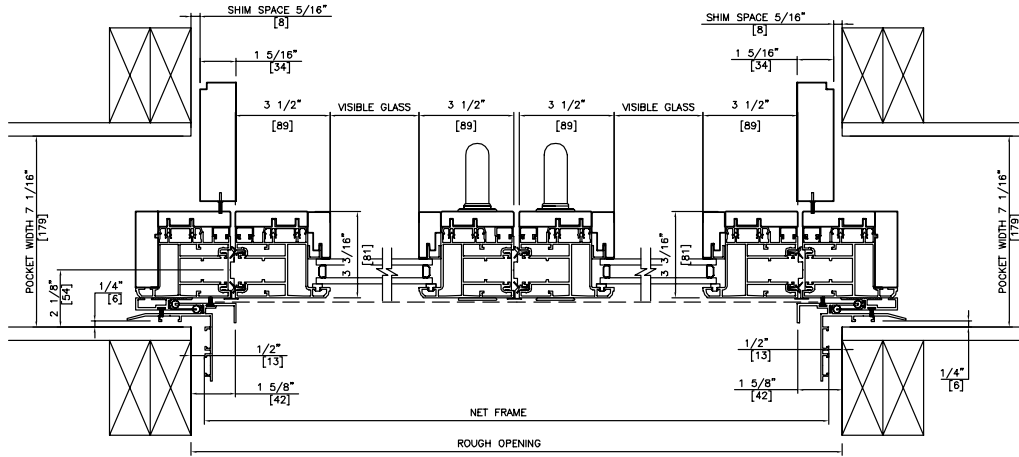
- Note:**
- Drawings shown are typical details.
  - Additional sizes and configurations available.
  - Screen options may be available depending on size and configuration.
  - Raised threshold available with a maximum of 6 panels per sill (12 in a bi-parting configuration; 2 per track).
  - Consult your Authorized Dealer for details.
  - All dimensions to have +/- 1/16" (2 mm) tolerance.
  - O = Fixed
  - X = Operating
  - P = Pocketing
- The preparation of the rough opening for large openings such as those required by, but not limited to, LiftSlide and Bifold doors have unique requirements. Structural headers that allow for deflection no greater than 1/8" along the unsupported length once the header is fully loaded are required. Special care needs to be taken when installing any unit including transoms above such large opening units.
  - Loewen is not responsible for site measurements or the determination of structural and architectural requirements for the installation of large opening products such as but not limited to, Liftslide and Bifold doors. Site specifications are the responsibility of building professionals or engineers to determine.





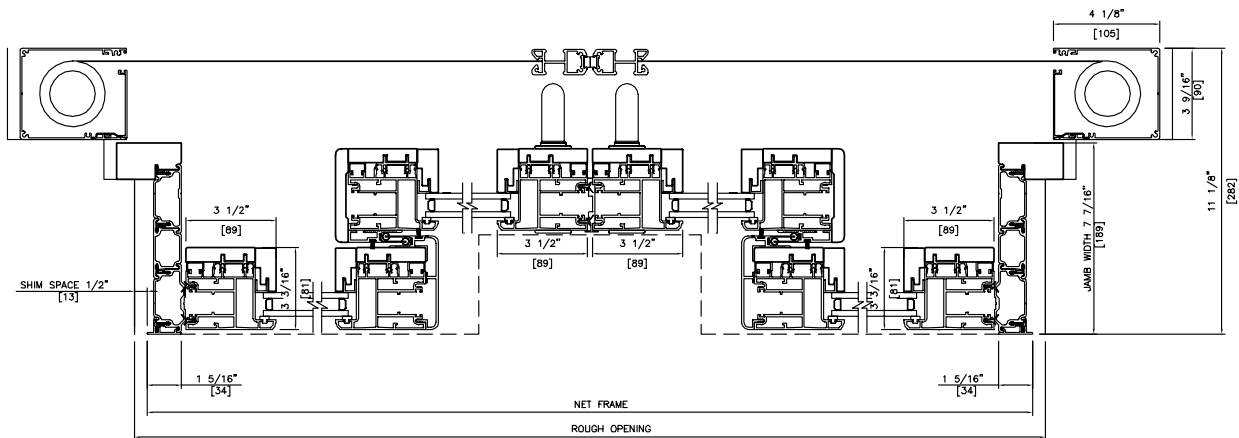
# Liftslide Detail

## Plan View



PX-XP STRAIGHT HEAD

## Plan View

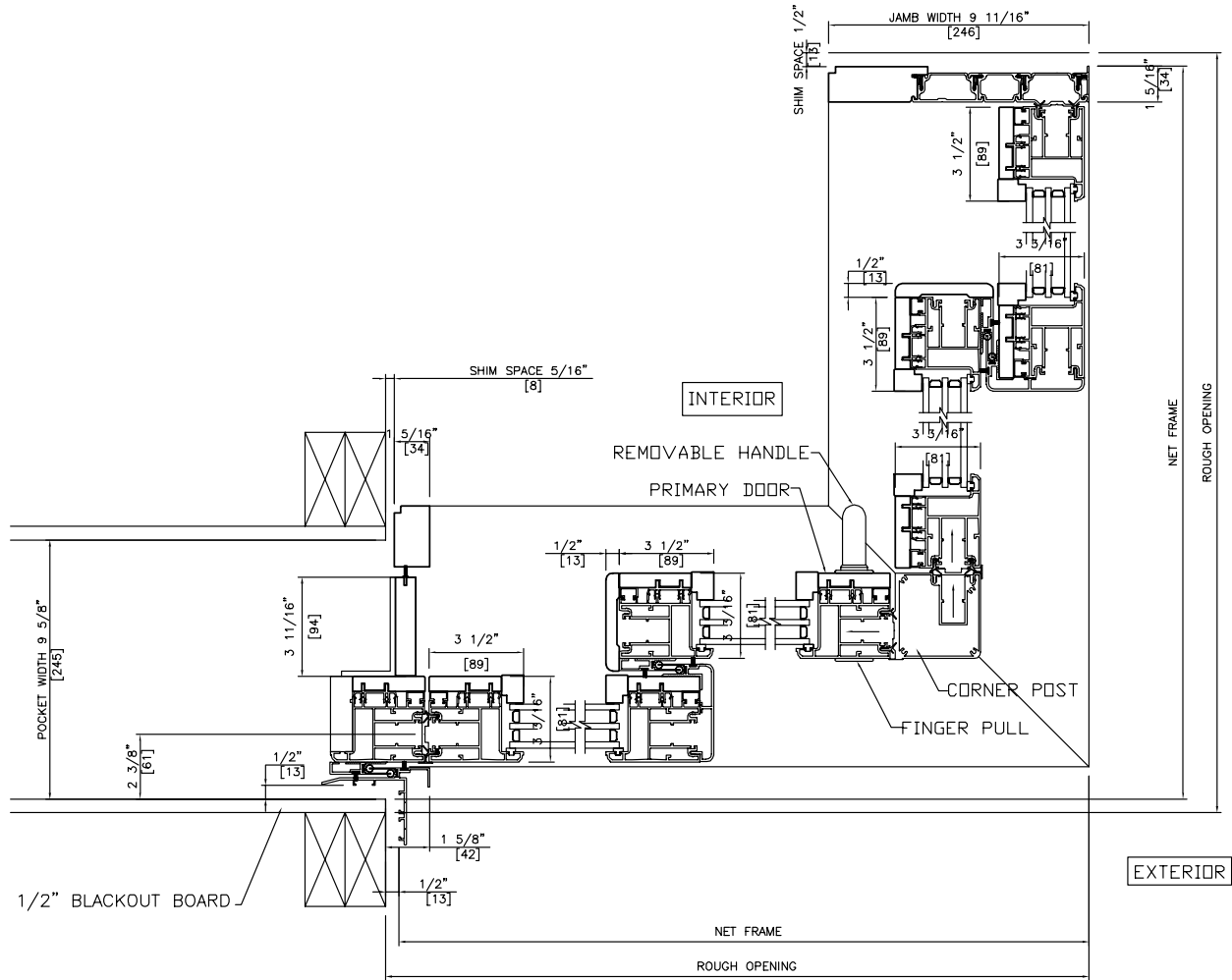


OX-XO STEPPED HEAD WITH SCREEN

- Note:**
- Drawings shown are typical details.
  - Additional sizes and configurations available.
  - Screen options may be available depending on size and configuration.
  - Raised threshold available with a maximum of 6 panels per sill (12 in a bi-parting configuration; 2 per track).
  - Consult your Authorized Dealer for details.
  - All dimensions to have +/- 1/16" (2 mm) tolerance.
  - O = Fixed
  - X = Operating
  - P = Pocketing
  - The preparation of the rough opening for large openings such as those required by, but not limited to, LiftSlide and Bifold doors have unique requirements. Structural headers that allow for deflection no greater than 1/8" along the unsupported length once the header is fully loaded are required. Special care needs to be taken when installing any unit including transoms above such large opening units.
  - Loewen is not responsible for site measurements or the determination of structural and architectural requirements for the installation of large opening products such as but not limited to, Liftslide and Bifold doors. Site specifications are the responsibility of building professionals or engineers to determine.

# Liftslide Door Detail

## Plan View



(90 DEGREE CORNER UNIT)

STRAIGHT HEAD, RAISED THRESHOLD

TRIPLE GLAZING, SQUARE STOPS

- Note:**
- Drawings shown are typical details.
  - Additional sizes and configurations available.
  - Screen options may be available depending on size and configuration.
  - Raised threshold available with a maximum of 6 panels per sill (12 in a bi-parting configuration; 2 per track).
  - Consult your Authorized Dealer for details.
  - All dimensions to have +/- 1/16" (2 mm) tolerance.
  - O = Fixed
  - X = Operating
  - P = Pocketing

- The preparation of the rough opening for large openings such as those required by, but not limited to, LiftSlide and Bifold doors have unique requirements. Structural headers that allow for deflection no greater than 1/8" along the unsupported length once the header is fully loaded are required. Special care needs to be taken when installing any unit including transoms above such large opening units.
- Loewen is not responsible for site measurements or the determination of structural and architectural requirements for the installation of large opening products such as but not limited to, Liftslide and Bifold doors. Site specifications are the responsibility of building professionals or engineers to determine.

## Liftslide Door Detail

### Typical Sizes

PANELS	CONFIGURATION	STYLE	FRAME TYPE	X					
				Rough Opening (3' Panels)	Head Width (3' Panels, No Screens)	Finish Pocket Width	Rough Opening (4' Panels)	Head Width (4' Panels, No Screens)	Finish Pocket Width
2	OX OR XO	STACKING	JAMB	73 [1854]	7 7/16 [189]	-	97 [2464]	7 7/16 [189]	-
3	OXX OR XXO	STACKING	JAMB	106 [2692]	11 1/4 [286]	-	142 [3607]	11 1/4 [286]	-
4	OXXX OR XXXO	STACKING	JAMB	139 [3531]	15 1/8 [384]	-	187 [4750]	15 1/8 [384]	-
5	OXXXX OR XXXXO	STACKING	JAMB	172 [4369]	19 [483]	-	232 [5893]	19 [483]	-
6	OXXXXX OR XXXXO	STACKING	JAMB	205 [5207]	22 13/16 [579]	-	277 [7036]	22 13/16 [579]	-
4	OX-XO	BI-PARTING	JAMB	142 3/16 [3612]	7 7/16 [189]	-	190 3/16 [4831]	7 7/16 [189]	-
6	OXX-XXO	BI-PARTING	JAMB	208 3/16 [5288]	11 1/4 [286]	-	280 3/16 [7117]	11 1/4 [286]	-
8	OXXX-XXXO	BI-PARTING	JAMB	274 3/16 [6964]	15 1/8 [384]	-	370 3/16 [9403]	15 1/8 [384]	-
10	OXXXX-XXXXO	BI-PARTING	JAMB	340 3/16 [8641]	19 [483]	-	460 3/16 [11689]	19 [483]	-
12	OXXXXX-XXXXXO	BI-PARTING	JAMB	406 3/16 [10317]	22 13/16 [579]	-	550 3/16 [13975]	22 13/16 [579]	-
1	PX OR XP	STACKING	SINGLE POCKET	39 11/16 [1008]	8 1/16 [205]	7 1/16 [179]	51 11/16 [1313]	8 1/16 [205]	7 1/16 [179]
2	PXX OR XXP	STACKING	SINGLE POCKET	72 11/16 [1846]	9 11/16 [246]	9 1/8 [232]	96 11/16 [2456]	9 11/16 [246]	9 1/8 [232]
3	PXXX OR XXXP	STACKING	SINGLE POCKET	105 11/16 [2684]	13 1/2 [343]	13 [330]	141 11/16 [3599]	13 1/2 [343]	13 [330]
4	PXXXX OR XXXXP	STACKING	SINGLE POCKET	138 11/16 [3523]	17 3/8 [441]	16 13/16 [427]	186 11/16 [4742]	17 3/8 [441]	16 13/16 [427]
5	PXXXXX OR XXXXXP	STACKING	SINGLE POCKET	171 11/16 [4361]	21 1/4 [540]	20 11/16 [525]	231 11/16 [5885]	21 1/4 [540]	20 11/16 [525]
6	PXXXXXX OR XXXXXP	STACKING	SINGLE POCKET	204 11/16 [5199]	25 1/16 [637]	24 9/16 [624]	276 11/16 [7028]	25 1/16 [637]	24 9/16 [624]
2	PX-XP	BI-PARTING	DUAL POCKET	75 1/2 [1918]	-	7 1/16 [179]	99 1/2 [2527]	-	7 1/16 [179]
4	PXX-XXP	BI-PARTING	DUAL POCKET	141 1/2 [3594]	-	9 1/8 [232]	189 1/2 [4813]	-	9 1/8 [232]
6	PXXX-XXXP	BI-PARTING	DUAL POCKET	207 1/2 [5271]	-	13 [330]	279 1/2 [7099]	-	13 [330]
8	PXXXX-XXXXP	BI-PARTING	DUAL POCKET	273 1/2 [6947]	-	16 13/16 [427]	369 1/2 [9385]	-	16 13/16 [427]
10	PXXXXX-XXXXXP	BI-PARTING	DUAL POCKET	339 1/2 [8623]	-	20 11/16 [525]	459 1/2 [11671]	-	20 11/16 [525]
12	PXXXXXX-XXXXXP	BI-PARTING	DUAL POCKET	405 1/2 [10300]	-	24 9/16 [624]	549 1/2 [13957]	-	24 9/16 [624]

Additional configurations and sizes available. Consult your Authorized Loewen Dealer for details.

PANEL HEIGHT	ROUGH OPENING HEIGHT (1" FLUSH TRACK)	ROUGH OPENING HEIGHT (1 1/2" FLUSH TRACK)	ROUGH OPENING HEIGHT (RAISED THRESHOLD)
84 [2134]	87 15/16 [2234]	88 7/16 [2246]	88 7/16 [2246]
96 [2438]	99 15/16 [2538]	100 7/16 [2551]	100 7/16 [2551]
108 [2743]	111 15/16 [2843]	112 7/16 [2856]	112 7/16 [2856]
120 [3048]	123 15/16 [3148]	124 7/16 [3161]	124 7/16 [3161]
144 [3658]	147 15/16 [3758]	148 7/16 [3770]	148 7/16 [3770]

Additional heights available. Consult your Authorized Loewen Dealer for details.

- Note:**
- O = Fixed
  - X = Operating
  - P = Pocketing
  - The preparation of the rough opening for large openings such as those required by, but not limited to, LiftSlide and Bifold doors have unique requirements. Structural headers that allow for deflection no greater than 1/8" along the unsupported length once the header is fully loaded are required. Special care needs to be taken when installing any unit including transoms above such large opening units.
  - Loewen is not responsible for site measurements or the determination of structural and architectural requirements for the installation of large opening products such as but not limited to, Liftslide and Bifold doors. Site specifications are the responsibility of building professionals or engineers to determine.

